

Multiple Sewershed Package 18A (Willow Springs) Project

Non-Mandatory WebEx Pre-Bid Meeting

September 21, 2021

Alla Korostyshevsky, P.E., PMP

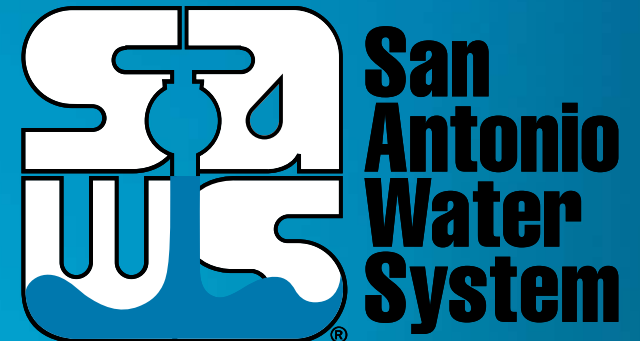
Pipelines – SSO Condition and Water Projects

Janie Powell

Contract Administrator

Marisol V. Robles

SMWVB Program Manager



MAKING SAN ANTONIO
WATERFUL



WebEx Housekeeping

- Stay muted during the entire presentation.
- Sign-In using the Chat feature ensuring to select “Everyone” from the drop down menu with name, company name and contact information.
- Ask questions at any time during the presentation utilizing the Chat. Questions will be addressed at the end of the presentation.
 - Ensure to direct your questions to the entire group by selecting everyone from the drop down.
 - All formal responses to questions will be provided via an Addendum.
- Audio only attendees may follow along on the presentation posted to the SAWS solicitation website.

Oral Statements

Oral statements or discussion during the pre-bid meeting today will not be binding, nor will it change or affect the terms or conditions within the Plans and Specifications of this Project. Changes, if any, will be addressed in writing only via an Addendum.

Agenda

- General Information
- Small, Minority and Woman-Owned Business (SMWB Requirements)
- IFB Schedule
- Contract Solicitation Website
- Vendor Registration & Notification (VRN)
- Contract Requirements
- Bid Packet Preparation
- Key Reminders
- Temporary Bid Opening Instructions
- Contact Information
- Technical Information

Multiple Sewershed Package 18A (Willow Springs)



General Information

- Non-Mandatory pre-bid meeting
- Presentation has been posted on SAWS website
- Geotechnical Report has been posted on SAWS website and is accessible upon completing a disclaimer form
- Construction services being procured through low bid
- Construction Estimate: \$493,637.95
- Calendar Days: 150 days

Multiple Sewershed Package 18A (Willow Springs)

Aspirational SMWB Goal

Industry	Aspirational SMWB Goal
Construction	20%

The aspirational SMWB goal is 20% of your total bid price.



Accepted SMWB Certification Agency

- **South Central Texas Regional Certification Agency**
 - MBE, WBE, SBE (Includes “HUB” Program)

Minimum Qualifications for SMWB recognition:

- **SBE-Certified** (even MBEs and WBEs)
- **Local office or local equipment yard**

Multiple Sewershed Package 18A (Willow Springs)

Good Faith Effort Plan (GFEP) FAQs

- **Q: Is the 20% aspirational SMWB goal mandatory?**
A: No, but we ask prime contractors to do their best with good faith outreach efforts. If the goal is not met, proof of outreach efforts is required with the submittal.
- **Q: What if I am having trouble finding SMWB subcontractors?**
A: Please email the SMWVB Program Manager with the scopes of work you are seeking. You will receive lists of local SMWVB-certified firms to contact.
- **Q: What if my business is SMWB-certified? Do I need to find SMWB subs?**
A: If your firm is SMWVB-certified, you will most likely meet the goal. However, the GFEP is a required document, and a good faith outreach effort is still necessary.
- **Q: Do I need to include all my subcontractors in the GFEP or just those that qualify towards the SMWB goal?**
A: All subcontractors need to be included in the GFEP, even those that may not count towards the SMWB goal.
- **Q: What if I have questions about the GFEP?**
A: Please contact the SMWVB Program Manager at 210-233-3420, or at Marisol.Robles@saws.org. GFEP questions can be asked at any time before the submittal is due.

Post Award: Subcontractor Payment & Utilization Reporting (S.P.U.R.) System

- 1. Subcontractor & Supplier Payment Tracking
- 2. Subcontractor and Supplier Additions or Substitutions
- 3. LCP Tracker
- 4. Must be Current and Accurate before Retainage is released

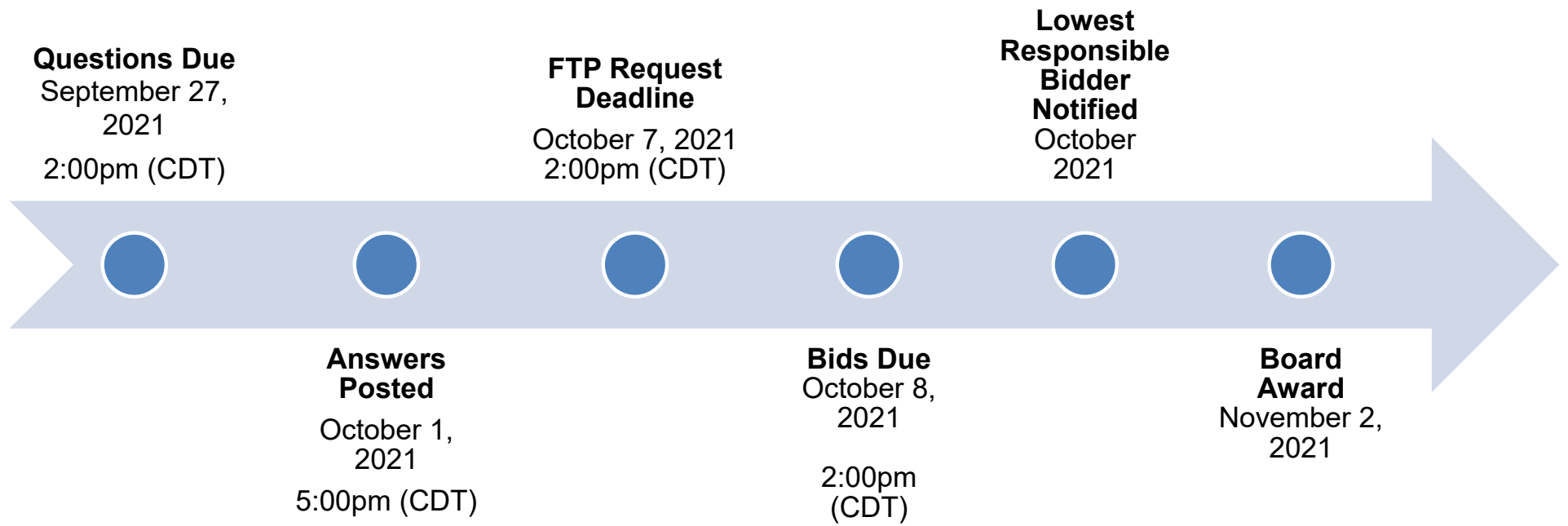
<https://saws.smwbe.com>



Multiple Sewershed Package 18A (Willow Springs)



IFB Schedule

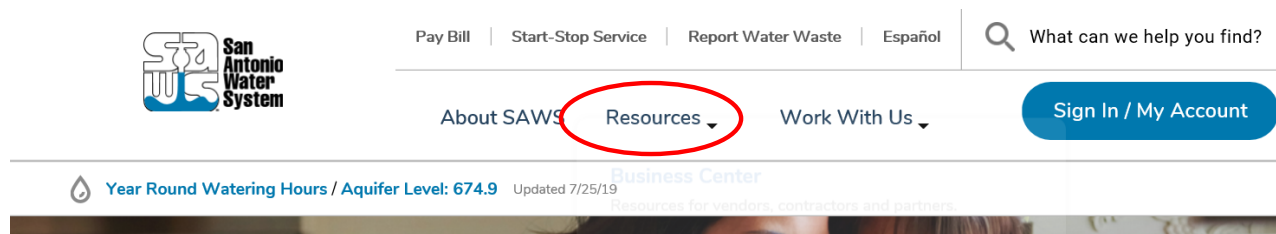


Multiple Sewershed Package 18A (Willow Springs)

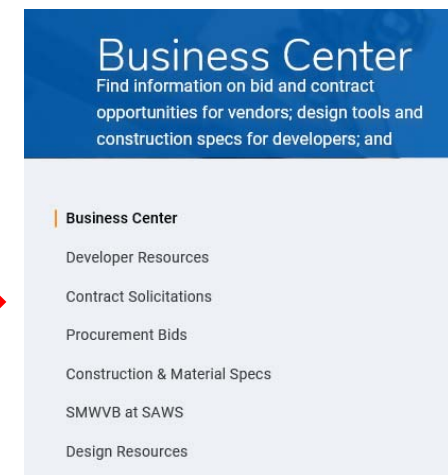


Contract Solicitations Website

- To locate the Contract Solicitations website choose Resources



- At the drop down menu choose Contract Solicitations.



Multiple Sewershed Package 18A (Willow Springs)

Vendor Registration & Notification (VRN)

Reasons to Register in the VRN

- Receive bid notices directly in your email “Inbox”.
- Download bid documents.
- Subscribe to specific bids.
- Receive addendum notifications.



Notify Me

Receive updates sent straight to your inbox.

Subscribe

https://apps.saws.org/Business_Center/Contractsol/

Multiple Sewershed Package 18A (Willow Springs)



Contract Requirements

Prevailing Wage Rate and Labor Standards – Section 2.10 of the General Conditions

- Payroll records are subject to review
- Contractors to utilize LCP Tracker
- Certified payroll to be submitted on weekly basis
- Contractors are responsible for sub-contractor payroll
- Late payrolls delay contractor payments from SAWS
- Wage decisions are included within the specifications
- Site visits are random and unannounced
- Interviews will be conducted and will be private & confidential
- All apprenticeship programs will need to be approved by Department of Labor prior to starting

Contract Requirements

Supplemental Conditions

- Insurance requirements are found in Section 5.7 of the GCs
 - Installation Floater in lieu of Builder's Risk
 - Maintain insurance coverage during the construction of this Project
- Will ask for insurance prior to Board award to expedite execution of the contract
- All contracts with SAWWS must be compliant prior to executing the contract for this project

Contract Requirements

Supplemental Conditions (Continued)

Apparent Low Bidder

- Notified within 24 hours of Bid Opening
- To provide the following within one (1) business day
 - Conflict of Interest Questionnaire - Form CIQ (Rev. 1/1/2021)
 - Proof of Insurability
 - Company Information Packet
 - Statement regarding ability to complete the project
 - W-9

*And, if bid was submitted electronically without a Bid Bond:

- Cashier's Check or Certified Check

Contract Requirements

Supplemental Conditions (Continued)

Apparent Low Bidder (Continued)

- Also to provide the following within one (1) business day
 - Statement of Bidder's Experience
 - Three (3) projects completed between 2016 – 2021
 - Completed by the Bidder
 - Project A-1 demonstrates construction of a minimum of 1,500 LF by open cut construction for sanitary sewer mains 8-inches or larger in an urban environment
 - Project A-2 demonstrates construction of a minimum 500 LF by open cut construction for sanitary sewer mains 8-inches or larger and located in area such as a municipal park, golf course, or similar.
 - Completed by the Bidder or Subcontractor (may be the same project as A-1 or A-2 or separate)
 - Project A-3 demonstrates construction of a connection to a large diameter sanitary sewer pipeline 48-inches in diameter or larger

Contract Requirements

Supplemental Conditions (Continued)

- Contractor shall perform the work with its own organization on at least 40% of the total original contract price which should be indicated on the Good Faith Effort Plan.

Prime Contractor's Percentage of Participation: (Ex: 100% is the total value of the contract.) _____ %

- Liquidated damages will be assessed at \$908.00 per day
- Several new statutes went into effect because of this past legislative session. SAWWS will be amending the Instructions to Bidders, which will be addressed via Addendum.

Bid Packet Preparation

- Utilize the Bid Packet Checklist within the specifications
- Double check all mathematical calculations and verify all extensions
- Ensure Mobilization and Preparing Right-Of-Way do not exceed percentage , excluding the allowance.
- Addendums are acknowledged on the Bid Proposals
 - Check our website regularly for addendum postings
 - It is possible to have multiple addendums during the time frame in addition to the scheduled final addendum
 - Known Addenda are in response to questions and applying changes due to recent legislation.
 - SAWS will issue a revised Bid Proposal Signature Page via Addendum and Bidders should use this revised version, which is requesting additional information.

Key Reminders

- All questions should be sent in writing to the corresponding Contract Administrator by email or fax.
- Please identify the project by its associated solicitation number.
(CO-00398)

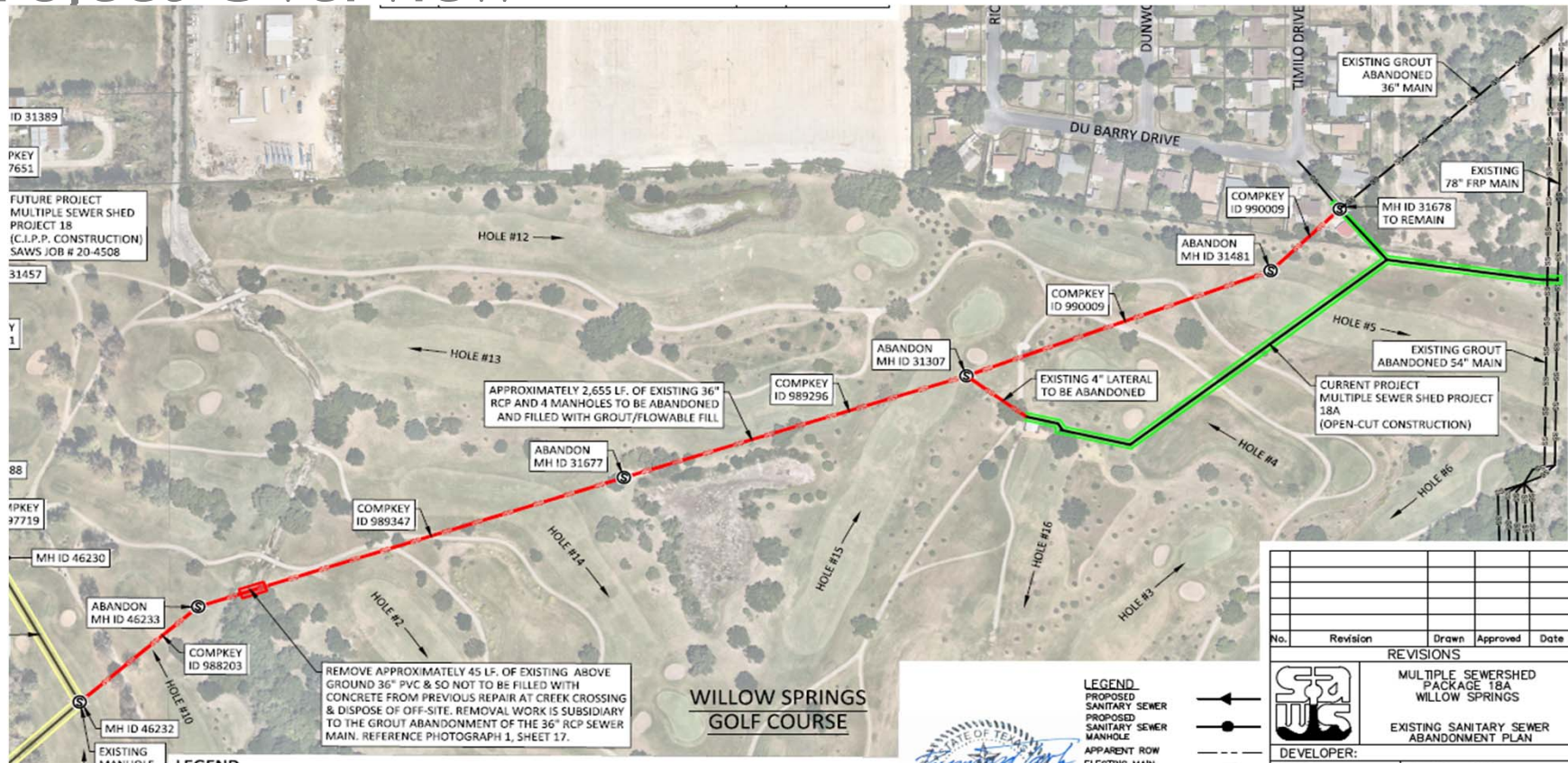
Temporary Bid Opening Procedures

- Bids will be submitted using SAWS' temporary bid opening procedures
- SAWS encourages and prefers the submission of electronic bids using its secure FTP site.
 - Bidders should submit a request via email to obtain access to the site no later than 24 hours before the bid opening.
- Or, Bidders may drop off bid; but only the required items
 - Drop box is located at 2800 US Hwy 281 N, Customer Service Tower
 - Enter the first set of glass double doors
 - Insert into the black drop box on the wall on the left hand side
- Late bids will not be accepted and will be returned unopened.
- Bid Opening will be handled via WebEx only; link found in IFB

Project Background

- Sealed Bids are requested by the San Antonio Water System for construction of approximately 1309 linear feet of 6” to 8” diameter sanitary sewer main, approximately 20 linear feet of jacking or boring, abandonment of approximately 2655 linear feet of existing 36” sewer main and associated manhole improvements.
- Project is part of the Consent Decree. See Special Conditions for additional information on these requirements.
- Contractor is to become familiar with the plans, locations, and specifications.

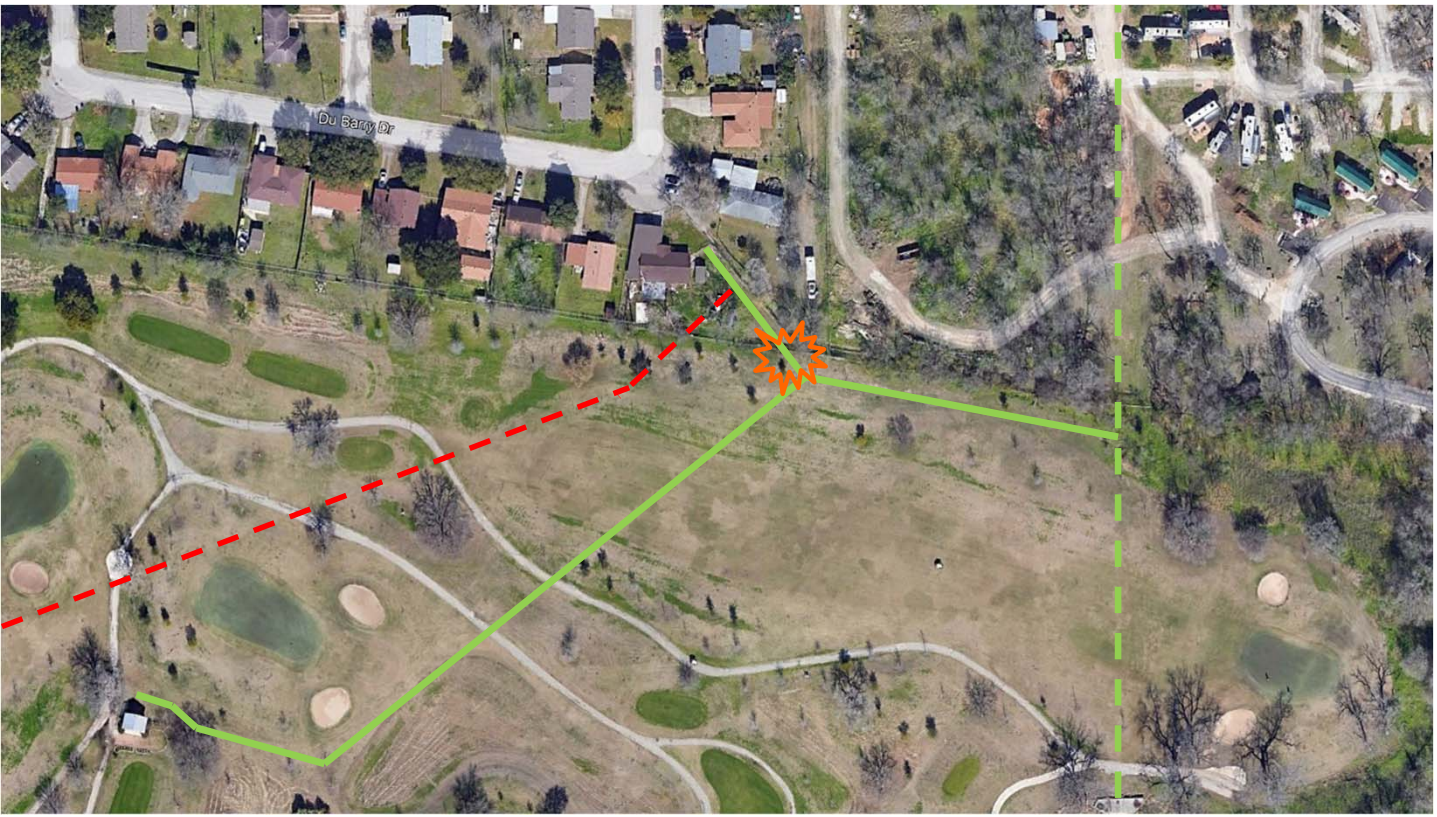
Project Overview



Multiple Sewershed Package 18A (Willow Springs)



Project Alignment

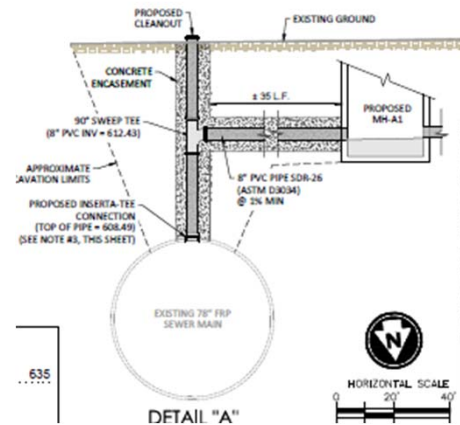


Multiple Sewershed Package 18A (Willow Springs)



Project Details

- Tie-In to 78" main is subsidiary to Item 848 Sanitary Sewer



- Work in private property required – narrow working space adjacent to shed



Multiple Sewershed Package 18A (Willow Springs)

Special Conditions

- Coordination with golf course required for hole closures
- Minimize golf course impacts by carefully sequencing work
- See Specification 1020 Allowances for hole closure and restoration allowances

Multiple Sewershed Package 18A (Willow Springs)



Special Provisions

- COSA Item 552 Removing and Relocating Irrigation Systems
 - Coordinate with golf course for locates
 - Approx locations shown in exhibit in plans
- Item 100 – Mobilization
 - Intermediate Demobilization/Remobilization

Multiple Sewershed Package 18A (Willow Springs)

Special Specifications

- Item 1020 Golf Course Restoration Allowances
 - Allowance 1 – Willow Springs Golf Course Restoration
 - Use approved subcontractor for final restoration on golf course

 - Allowance 2 – Willow Springs Golf Course Hole Closure
 - Closures of Hole 1 for installation of new line
 - Limited to 25 days

Multiple Sewershed Package 18A (Willow Springs)

Contact Information

<u>Contact Name</u>	<u>Title</u>	<u>Telephone Number</u>	<u>Email address</u>
Janie Powell	Contract Administrator	210-233-2443	Janie.Powell@saws.org
Marisol V. Robles	SMWVB Program Manager	210-233-3420	Marisol.Robles@saws.org

REMINDER

Please be advised that Bidders are prohibited from communicating with any other SAWS staff, the Consultant, the Developer, or City of San Antonio officials regarding this IFB up until the contract is awarded as outlined in the Instructions to Bidders

QUESTIONS



Reminder: Oral statements or discussion during the pre-bid meeting today will not be binding, nor will it change or affect the terms or conditions within the Plans and Specifications of this Project. Changes, if any, will be addressed in writing only via an Addendum.

Multiple Sewershed Package 18A (Willow Springs)

